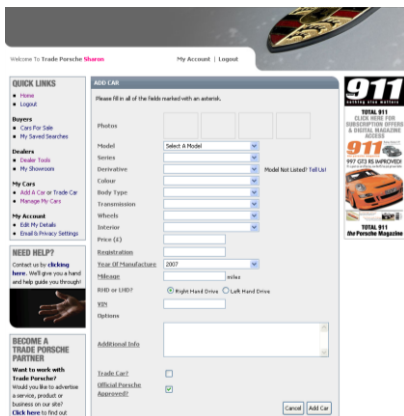
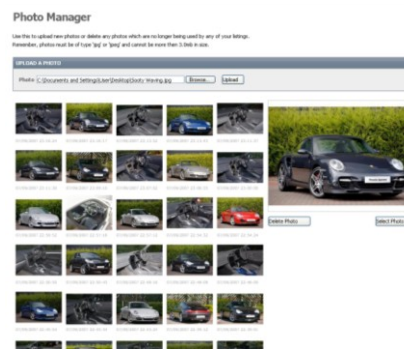


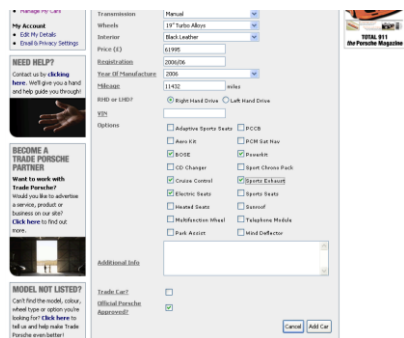
Adding A Car To Trade Porsche



Simply use the drop down boxes to enter the cars details. Some of the boxes will automatically load with predefined data according to what you have selected in the previous box. For example if you select a 996 GT3 RS, you will only have two colour choices available. Once you have filled in all the boxes the key options for the model you have selected will appear at the bottom. Simply click on the boxes for the options that are applicable to your car and a tick will appear in each one you select. Any additional options and information can be typed into the box at the bottom labelled Additional Info. At the bottom of the page you will see a box labelled Quick Sale, if you click this box your cars details will not appear on the site. They will instead be sent to all the Trade Porsche approved dealers on the site. Please only click this button if you are looking to sell your car to a trader.



Before you click on the Add Car button at the bottom of the screen, you can add up to four photos of your car. To add a photo simply click on one of the four grey boxes at the top of the screen, this will take you to the adjacent screen. Click on Browse ad then search for your photo. Once you have found it simply click Upload and your photo will appear below in your Photo manager section. The last picture that you have uploaded will always be the first picture that you see (top left photo) Click on the picture and it will appear in the larger box to the top right of the screen as pictured adjacent. If you are happy with the photo click Select Photo and it will take you back to the previous screen.



To add further photos repeat the steps above selecting a different one of the grey boxes each time. Once you have added your photographs, please click Add Car. Your cars details will then emailed to ourselves as we need to approve each advert before it appears on the site. This will always be within 24 hours, but will normally be within an hour.



You will then be taken back to the manage my cars screen. To delete your advert simply click on the Rubbish Bin Icon underneath your cars details, to edit your cars details please click on the Pencil Icon.

If you experience any problems or require any further help please do not hesitate to contact us by visiting [Trade Porsche](http://www.tradeporsche.com).